

# *Gwaii Haanas*

*(Queen Charlotte Islands)*

## *Aboard the Ocean Light II*

*2015 Edition*







© Ocean Light II Adventures

## Gwaii Haanas

The Queen Charlotte Islands are a large archipelago that consists of 2 main islands and a myriad of small ones 120 kilometres off the northwest coast of British Columbia. Prior to 1977, the natural and cultural wonders of Moresby Island, the southerly of the two large islands, were little known except to a handful of biologists and archaeologists, and the Haida Natives. In 1979, some of the first ecotourists were brought to the area and began to discover the never-ending magic of the place the Haida refer to as Gwaii Haanas, meaning, 'place of wonder'. In 1988, the Islands Protection Society and its friends, and supporters, were successful in winning a hard fought battle which saw the creation of Gwaii Haanas National Park Reserve.

## Highlights

What are some of the things that make the Queen Charlotte Islands so incredible? They possess a biological and cultural treasure that is duplicated nowhere else on earth. South Moresby has one of the richest Temperate Pacific Marine Zones in the world and has a coastline that is ideal to sail/cruise along due to the convoluted shoreline and countless islands. The area's biological treasures include towering forests of sitka spruce and red cedar carpeted by thick mosses, scenic bonsai bogs and alpine forests. There are also

major salmon runs, rich and diverse intertidal populations, the largest Stellar sea lion population in B.C., as well as other abundant wildlife including seals, whales and porpoise.

The second treasure of the Queen Charlottes is the Haida heritage. The Haida inhabited the islands for more than 10,000 years and habitation sites of various vintages are easily visible. Weather permitting, we will visit Windy Bay (Hlk'waah), Burnaby Narrows, T'anuu, and Sgan Gwaii (Ninstints), the hallmark of historic sites with its large standing totems.

## What's Involved?

Your week aboard the *Ocean Light II* is designed to give you access to the best Gwaii Haanas (South Moresby) has to offer; from abandoned Haida villages such as T'anuu and Ninstints, to the magnificent Pacific northwest rain forest, to intriguing natural history displays, such as busy sea lion haul-outs and colourful intertidal areas. The exact itinerary of your trip will be dictated by weather and sea conditions; however, we will use the long days to maximize your time and experience in the Charlottes. Sailing opportunities are limited as our prime objective is to use the *Ocean Light II* as a mode of travel between the spots of special interest exploring these areas on foot and by kayak and inflatable.

# Ocean Light II Adventures



Fitness should be of a general level for this expedition; however, a good level of fitness will always make your trip more enjoyable, so please exercise regularly prior to your trip. Children are welcome to join trips aboard the *Ocean Light II* but we ask that parents contact us prior to booking to ensure that the departure they choose is a “family departure”.

## 2015 Dates & Prices

**Dates:** • July 5–12                      • July 19–26  
              • July 12–19                    • July 26–August 2

**Availability:** Please email us ([adventure@oceanlight2.bc.ca](mailto:adventure@oceanlight2.bc.ca)) to check availability on any of the trips above.

**Price:** 8-day trip: \$3,699 per person CDN plus plus 5% GST from Sandspit, BC. Price includes \$120 Park Fee, all meals as per the itinerary and return transportation into and out of park.

**Number of Participants:** Maximum of 9

**Number of Crew:** 2

### What's Included?

- The services of a fully qualified skipper/guide and cook/crew
- Transfer services (i.e., van & zodiac or boat) while on the trip
- Float plane transfer at one end of the trip to increase your total time in Gwaii Haanas Park
- all meals as listed on the itinerary from Lunch Day 1 to Breakfast Day 8 (B = Breakfast; L = Lunch; D = Dinner)

### What's Not?

- Gratuities for crew (optional and/or discretionary, but always appreciated!)

- Transportation between your home and Sandspit, BC
- Personal belongings and equipment as per “Clothing & Equipment List”
- Any meals and accommodation in Vancouver and/or Sandspit
- Excess baggage charges
- Any extra personal expenses incurred because of weather, logistical delays, or delayed departures of chartered or scheduled aircraft.

## Itinerary

You must arrive in Sandspit prior to Day 1 of your expedition. Those wishing to spend some time exploring before or after the trip can travel north to Graham Island to visit Queen Charlotte City, the native village of Skidegate, and the Haida Heritage Centre and Haida Gwaii Museum near Skidegate Landing.





# Ocean Light II Adventures

Upon your arrival in Sandspit, your Bed & Breakfast host will confirm what time the taxi will pick you up on Sunday, which is usually between 6:30 and 7:30 am.

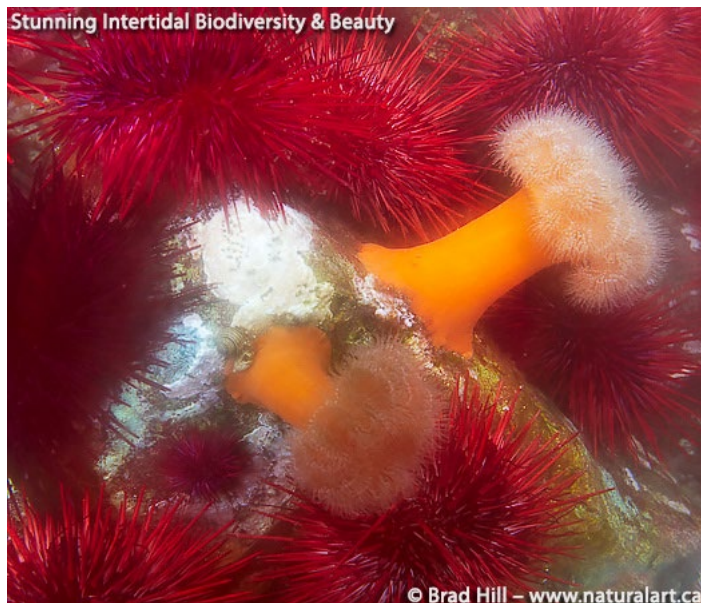
This itinerary is a sample only – the exact itinerary of your trip will be dictated by factors such as weather, tides, and group interest, with the crew working within the parameters of safety, time, and the highlights of the area.

## Day 1 – L/D

In the early morning you will be taken by van/zodiac or by plane to meet the *Ocean Light II*. You may begin your trip with a visit to the magical moss-laden remains of west coast artist Emily Carr's favourite Haida Village, T'anuu or "Seagrass Town".

## Days 2 through 7 – B/L/D

Beyond T'anuu, we may take the Inside Passage through beautiful Darwin Sound with its steep-sided mountains into scenic De La Beche Inlet. If weather permits we may venture along the east side of Lyell Island and into magnificent Windy Bay (Hlk'waah), a primeval watershed of ancient cedar and spruce forests.



Further travels include cruising along the Tar Islets, and through Juan Perez Sound. Across Juan Perez Sound is Burnaby Narrows with an incredibly rich display of intertidal life. This area also affords access to the Charlottes' alpine, with its ornate bonsai bogs studded with miniature sundew. The narrows open southward into Skincuttle Inlet where we witness the unique and sometimes bizarre nocturnal habits of many of the nesting seabirds.

We leave the East Coast through Houston-Stewart Channel, passing by the old whaling station at Rose Harbour to the open West Coast. Here we visit Sgan Gwaii (Anthony Island), cultural site of Ninstints

Village with its great display of Haida totems and spiritual ambience from the powerful past of its former residents. We may also have an opportunity to visit many of the surrounding inlets and western shores of Sgan Gwaii to view seals, sea lions, and breathtaking seascapes.

## Day 8 – B

An early morning zodiac/van or plane will take you back into Sandspit. In order to accommodate any delays in returning to Sandspit, please book the afternoon flight to Vancouver.

## More About the Trip

**The Boat.** The *Ocean Light II* is an Ocean 71' ketch and is thought by many to be the perfect B.C. Coast charter yacht. With fourteen Atlantic crossings, the *Ocean Light II* has the pedigree and comfort to make any sailing experience with her one to remember. It has a spacious, well maintained interior of mahogany, authentic Douglas Fir and white enamel.

The layout offers 5 separate guest cabins that are closed off from the rest of the yacht. A berth will be assigned to each person upon arrival. There are two heads, a shower and the interior is all newly remodeled. The

# Ocean Light II Adventures

A Super-pod of Pacific White-sided Dolphins



main salon located below deck is a spacious 14' x 17', which seats twelve comfortably while still leaving space to move about freely. There is ample deck space and she is very comfortable under sail. *Ocean Light II* features all of the extras expected: 19' hard bottom inflatable, six kayaks as well as an extensive library for your enjoyment.

For more information about our boat – including images of the interior – just visit this page on our website:

<http://www.oceanlight2.bc.ca/html/about/boat.html>

**The Guides & Crew.** Skippers Tom Ellison and Chris Tulloch have 60 years of combined coastal sailing experience. They have introduced the coast of B.C. to hundreds of people, young and old. Assisting as crew, guide, and cook is Jenn Broom. She has worked on the coast for many years and will make you feel at home aboard our beautiful boat. *Ocean Light II Adventures* and her crew continually contribute a tremendous amount to the conservation of our endangered wilderness areas.

**Meals.** We take special care in preparing nutritious and delicious meals. All meals will be prepared aboard the sailboat and will include fresh seafood, homemade soups, breads and salads. Wine is served with dinner, and you may bring your own drinks to be consumed in moderation and only when the anchor is down for the night. We will not tolerate excessive drinking on our vessel. Clients have the option to assist in food

gathering and meal preparation. If you have particular dietary restrictions, please let us know well in advance.

**Safety.** Your safety while participating in this expedition is of our prime concern. The guides are well trained in wilderness first-aid techniques and are very experienced in the outdoors. Ultimately your guide makes decisions with your comfort and safety in mind, yet tries to maximize the experience of the adventure for each individual. We stress that listening carefully to instructions and directions given by the guide is your ultimate responsibility and in the best interest of yourself and the group.

For more information about this once-in-a-lifetime expedition, please contact us at:

Email: [adventure@oceanlight2.bc.ca](mailto:adventure@oceanlight2.bc.ca)

Phone: 604-328-5339

